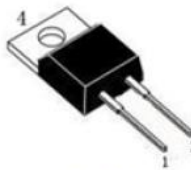
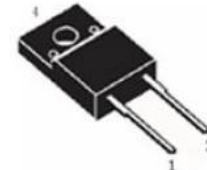
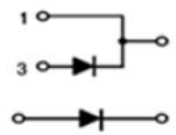


HYPERFAST RECOVERY RECTIFIERS		REVERSE VOLTAGE 200 Volts FORWARD CURRENT 15 Amperes			
<p>FEATURES</p> <ul style="list-style-type: none"> • Low forward voltage drop • Excellent high temperature stability • Fast switching capability • Low reverse current • High Current Capability and Low Forward Voltage Drop <p>MECHANICAL DATA</p> <ul style="list-style-type: none"> • Case: TO-220, TO-220F • Polarity: Cathode Band 		<div style="display: flex; justify-content: space-around;"> <div style="text-align: center;"> <p>UF15G02ST</p>  <p>T0-220</p> </div> <div style="text-align: center;"> <p>UF15G02FST</p>  <p>T0-220F</p> </div> </div> <div style="text-align: center; margin-top: 20px;">  <p>1、CATHODE 3、ANODE</p> </div>			
<p>MAXIMUM RATINGS AND ELECTRICAL CHARACTERISTICS Ratings at 25 °C ambient temperature unless otherwise specified. Single phase, half wave, 60Hz, resistive or inductive load. For capacitive load, derate current by 20%</p>					
Characteristics		Symbol	UF15G02ST	UF15G02FST	Unit
Maximum Repetitive Peak Reverse Voltage		V_{RRM}	200		V
Maximum RMS Reverse Voltage		V_{RMS}	140		V
Maximum DC blocking voltage		V_{DC}	200		V
Maximum Instantaneous Forward Voltage at 15A		V_F	1.1		V
Maximum DC Reverse Current @TA=25°C		I_R	5		μA
at Rated DC Blocking Voltage @TA=125°C			200		
Maximum Average Forward Rectified Current		I_F	15		A
Peak Forward Surge Current, 8.3 ms Single Half Sine-wave Superimposed on Rated Load		I_{FSM}	150		A
Maximum Reverse Recovery Time ($I_F=0.5A, I_R=1A, I_{rr}=0.25A$)		T_{rr}	25		nS
Typical Junction Capacitance		C_J	120		pF
Typical Thermal Resistance Junction to Case		TO-220	2.5		°C/W
		TO-220F	4		
Junction and Storage Temperature Range		T_J, T_{STG}	-55 to +150		°C
NOTES:					

Rating and Characteristic Curves

FIG.1-TYPICAL FORWARD CURRENT DERATING CURVE

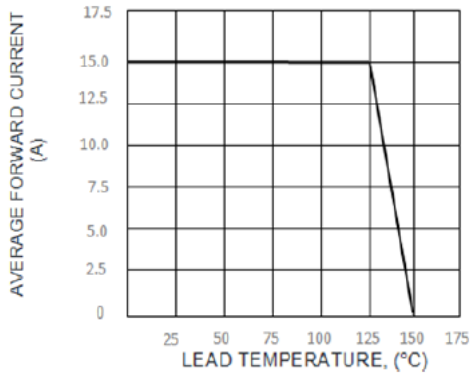


FIG.2-MAXIMUM NON-REPETITIVE PEAK FORWARD SURGE CURRENT

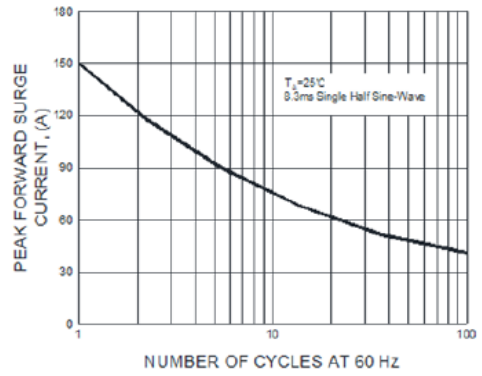


FIG.3-TYPICAL INSTANTANEOUS FORWARD CHARACTERISTICS

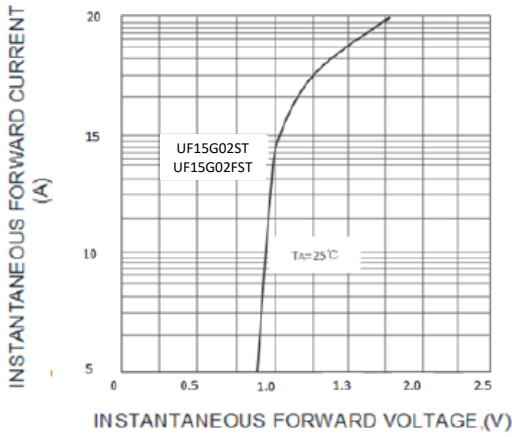


FIG.4-TYPICAL REVERSE CHARACTERISTICS

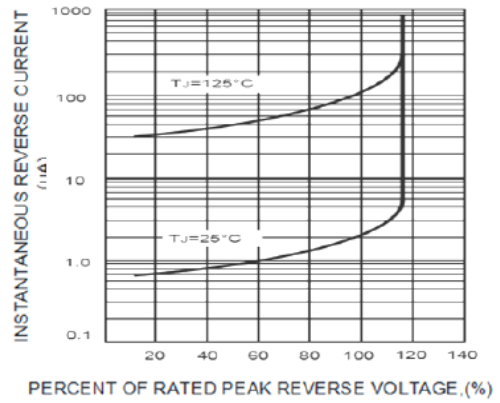
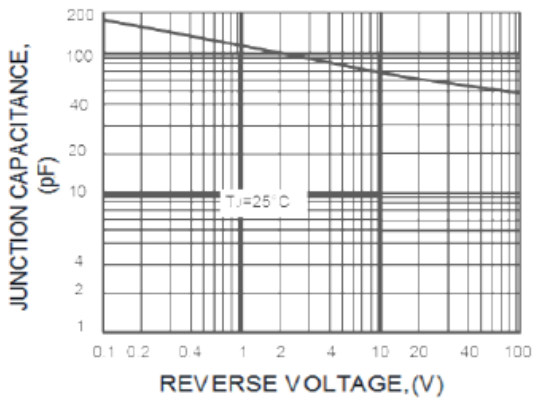


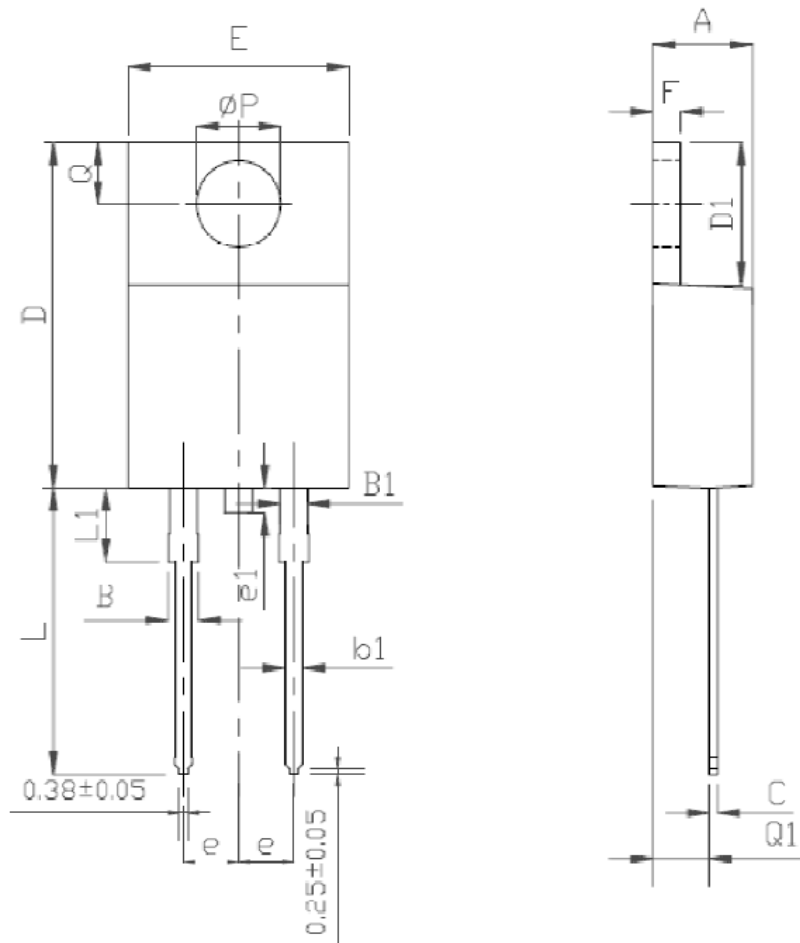
FIG.5-TYPICAL JUNCTION CAPACITANCE



TO-220 MECHANICAL DATA

UNIT: mm

SYMBOL	MIN	NOM	MAX	SYMBOL	MIN	NOM	MAX
A	4		4.8	e		2.54	
B	1.2		1.4	e1	1		1.5
B1	1		1.4	F	1.1		1.4
b1	0.65		1	L	12.5		14.5
c	0.4		0.55	LI	3	3.5	4
D	15		16.5	ΦP		3.8	
D1	5.9		6.9	Q	2.5		3
E	9.9		10.7	Q1	2		2.9



TO-220F MECHANICAL DATA

UNIT: mm

SYMBOL	MIN	NOM	MAX	SYMBOL	MIN	NOM	MAX
A	4.5		4.9	E1		7	
A1	2.3		2.9	e		2.54	
b	0.45		0.9	e1	1		1.5
b1	1.1		1.7	L	12.5		14.3
b2	1.2		1.4	L1	9.45		10.05
c	0.35		0.9	L2	15		16
D	14.5		17	L3	3.2		4.4
D1	6.1		6.9	ΦP	3		3.3
E	9.6		10.3	Q	2.5		2.9

