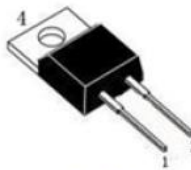
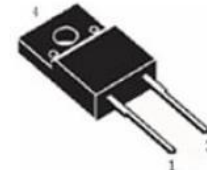
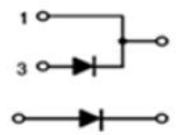


| HYPERFAST RECOVERY RECTIFIERS | | REVERSE VOLTAGE 200 Volts FORWARD CURRENT 15 Amperes | | | |
|---|--|--|-------------|------------|---------|
| <p>FEATURES</p> <ul style="list-style-type: none"> • Low forward voltage drop • Excellent high temperature stability • Fast switching capability • Low reverse current • High Current Capability and Low Forward Voltage Drop <p>MECHANICAL DATA</p> <ul style="list-style-type: none"> • Case: TO-220, TO-220F • Polarity: Cathode Band | | <div style="display: flex; justify-content: space-around;"> <div style="text-align: center;"> <p>UF15G02ST</p>  <p>T0-220</p> </div> <div style="text-align: center;"> <p>UF15G02FST</p>  <p>T0-220F</p> </div> </div> <div style="text-align: center; margin-top: 20px;">  <p>1、CATHODE 3、ANODE</p> </div> | | | |
| <p>MAXIMUM RATINGS AND ELECTRICAL CHARACTERISTICS Ratings at 25 °C ambient temperature unless otherwise specified. Single phase, half wave, 60Hz, resistive or inductive load. For capacitive load, derate current by 20%</p> | | | | | |
| Characteristics | | Symbol | UF15G02ST | UF15G02FST | Unit |
| Maximum Repetitive Peak Reverse Voltage | | V_{RRM} | 200 | | V |
| Maximum RMS Reverse Voltage | | V_{RMS} | 140 | | V |
| Maximum DC blocking voltage | | V_{DC} | 200 | | V |
| Maximum Instantaneous Forward Voltage at 15A | | V_F | 1.1 | | V |
| Maximum DC Reverse Current @TA=25°C | | I_R | 5 | | μA |
| at Rated DC Blocking Voltage @TA=125°C | | | 200 | | |
| Maximum Average Forward Rectified Current | | I_F | 15 | | A |
| Peak Forward Surge Current, 8.3 ms Single Half Sine-wave Superimposed on Rated Load | | I_{FSM} | 150 | | A |
| Maximum Reverse Recovery Time ($I_F=0.5A, I_R=1A, I_{rr}=0.25A$) | | T_{rr} | 25 | | nS |
| Typical Junction Capacitance | | C_J | 120 | | pF |
| Typical Thermal Resistance Junction to Case | | TO-220 | 2.5 | | °C/W |
| | | TO-220F | 4 | | |
| Junction and Storage Temperature Range | | T_J, T_{STG} | -55 to +150 | | °C |
| NOTES: | | | | | |

Rating and Characteristic Curves

FIG.1-TYPICAL FORWARD CURRENT DERATING CURVE

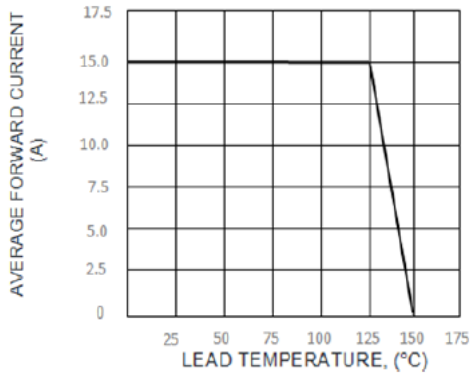


FIG.2-MAXIMUM NON-REPETITIVE PEAK FORWARD SURGE CURRENT

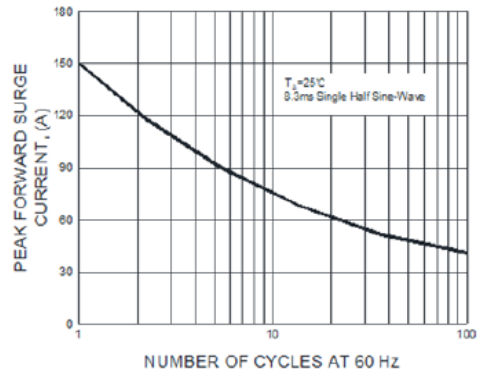


FIG.3-TYPICAL INSTANTANEOUS FORWARD CHARACTERISTICS

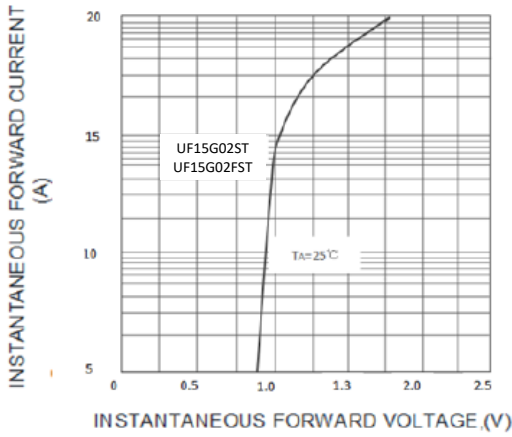


FIG.4-TYPICAL REVERSE CHARACTERISTICS

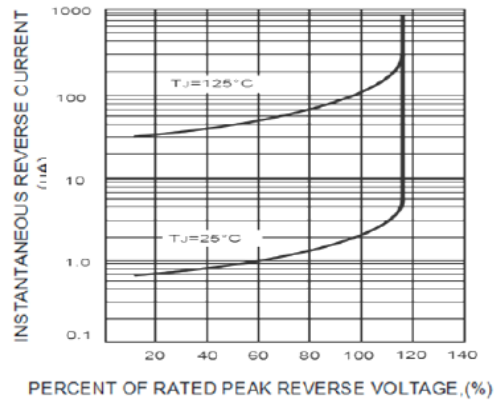
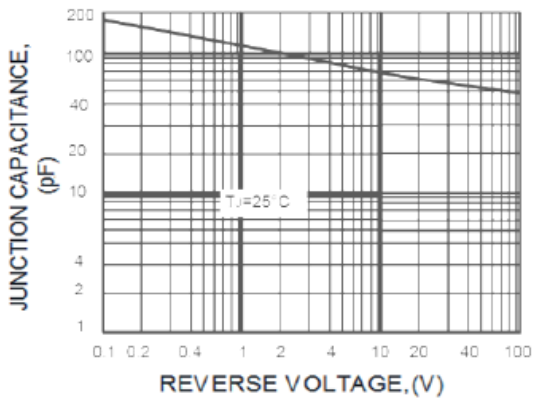


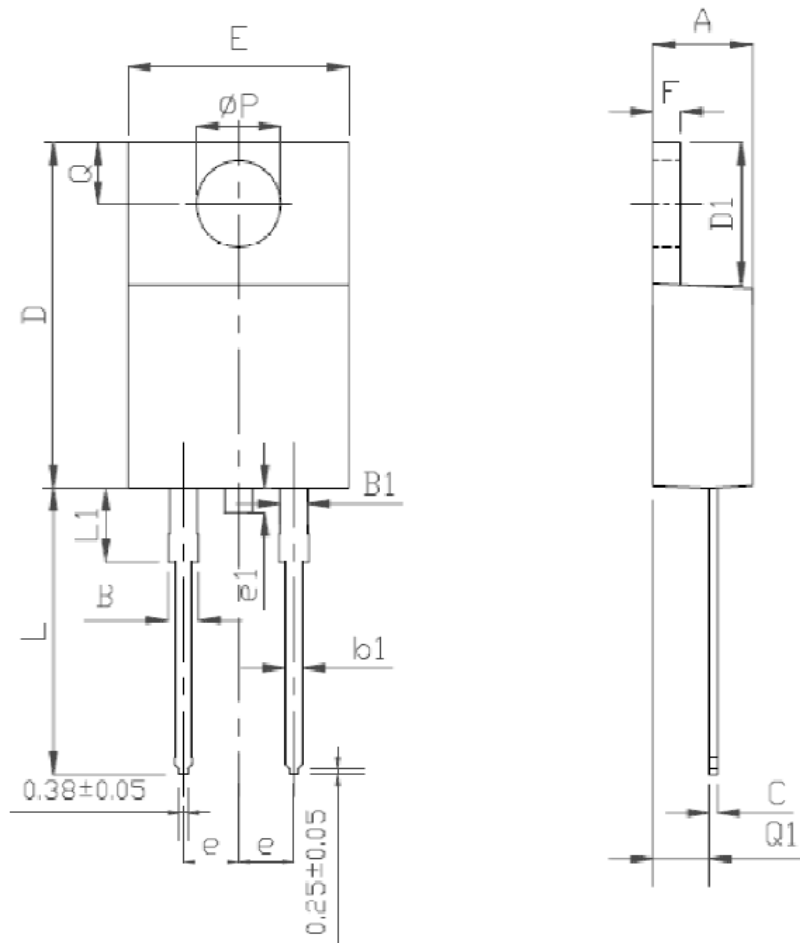
FIG.5-TYPICAL JUNCTION CAPACITANCE



TO-220 MECHANICAL DATA

UNIT: mm

| SYMBOL | MIN | NOM | MAX | SYMBOL | MIN | NOM | MAX |
|--------|------|-----|------|--------|------|------|------|
| A | 4 | | 4.8 | e | | 2.54 | |
| B | 1.2 | | 1.4 | e1 | 1 | | 1.5 |
| B1 | 1 | | 1.4 | F | 1.1 | | 1.4 |
| b1 | 0.65 | | 1 | L | 12.5 | | 14.5 |
| c | 0.4 | | 0.55 | LI | 3 | 3.5 | 4 |
| D | 15 | | 16.5 | ΦP | | 3.8 | |
| D1 | 5.9 | | 6.9 | Q | 2.5 | | 3 |
| E | 9.9 | | 10.7 | Q1 | 2 | | 2.9 |



TO-220F MECHANICAL DATA

UNIT: mm

| SYMBOL | MIN | NOM | MAX | SYMBOL | MIN | NOM | MAX |
|--------|------|-----|------|--------|------|------|-------|
| A | 4.5 | | 4.9 | E1 | | 7 | |
| A1 | 2.3 | | 2.9 | e | | 2.54 | |
| b | 0.45 | | 0.9 | e1 | 1 | | 1.5 |
| b1 | 1.1 | | 1.7 | L | 12.5 | | 14.3 |
| b2 | 1.2 | | 1.4 | L1 | 9.45 | | 10.05 |
| c | 0.35 | | 0.9 | L2 | 15 | | 16 |
| D | 14.5 | | 17 | L3 | 3.2 | | 4.4 |
| D1 | 6.1 | | 6.9 | ΦP | 3 | | 3.3 |
| E | 9.6 | | 10.3 | Q | 2.5 | | 2.9 |

